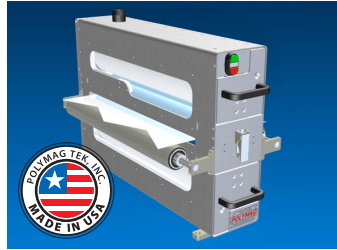
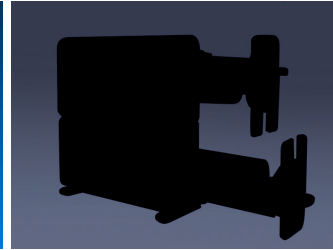


## Competitor Comparison

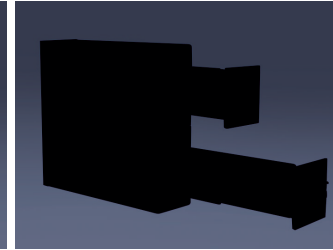
# Clamshell Style Contact Cleaning Roll Systems



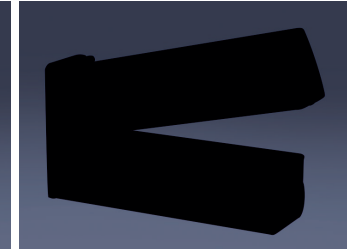
**Polymag Tek Inc.  
4RNWC-CD / 6RNWC-CD**



**Brand A**



**Brand B**



**Brand C**

<b>Maximum Web Speed</b>	Up to 800 fpm (245 mpm)	Up to 820 fpm (250 mpm)	700 fpm (213.3 mpm)	1312 fpm (400 mpm) <sup>1</sup>
<b>Maximum Contact Cleaning Roll (CCR) Width</b>	Up to 40" (1016 mm)	Up to 30" (762 mm)	Up to 26" (660 mm)	Up to 25.6" (650 mm)
<b>Recommended Maximum Web Width</b>	Up to 39.37" (1000 mm)	Up to 29.5" (750 mm)	Up to 25.2" (640 mm)	Up to 25" (635 mm)
<b>Number of CCRs that can be Utilized</b>	2 standard or 4 optional	2 standard or 4 optional	2 standard or 4 optional	2 standard
<b>Contact Cleaning Roll (CCR) O.D.</b>	2.25" (57.1 mm) <sup>2</sup>	1.94" (49.25 mm)	1.5" (38.1 mm)	Unknown (Estimate 1.97" - 50 mm)
<b>Contact Cleaning Roll (CCR) Tack Levels</b>	Standard, low and high	Unknown	Unknown	Unknown
<b>CCR Shaft Construction</b>	Stainless steel deadshaft <sup>3</sup>	Stainless steel liveshaft	Stainless steel deadshaft <sup>3</sup>	Unknown
<b>Construction</b>	Electroless nickel-plated steel, backplate 12 gauge stainless steel shell/infrastructure with anodized aluminum components	Extruded aluminum infrastructure, with stainless steel sheet metal shell and anodized aluminum components	Anodized aluminum	Anodized aluminum
<b>Mounting</b>	Baseplate and backplate	Baseplate and backplate	Baseplate and backplate	Baseplate and backplate
<b>Clamshell/Crocodile Opening</b>	Yes, to promote easy web threadup and CCR maintenance	Yes, to promote easy web threadup and CCR maintenance	Yes, to promote easy web threadup and CCR maintenance	Yes, to promote easy web threadup and CCR maintenance
<b>LED Illumination Capability when Opened</b>	Standard, for CCR maintenance or web thread-up	Not available	Not available	Not available
<b>Integrated, Active Static Elimination Bars</b>				
<b>Exit Side</b>	Standard (Top only) <sup>4</sup>	Standard (Top & bottom)	Optional	Standard (Top & bottom)
<b>Entrance Side</b>	Standard (Top only) <sup>4,5</sup>	Optional	Unknown	Unknown
<b>Side Access Tape Drawers</b>	Standard	Standard	Standard	Standard
<b>"Change-on-the-Fly" Capability</b>	Yes	Yes	Yes	Yes
<b>Tape Roll Accessibility</b>	Ergonomic 320° access	270° access	270° access	270° access
<b>Tape Drawer Locking - Off-Line</b>	Magnetic lock	Manual lock	Manual lock	Manual lock
<b>Tape Drawer Locking - On-Line</b>	Pneumatic lock	Manual lock	Manual lock	Manual lock
<b>Tape Roll Spring-Loaded Gudgeons (End Caps)</b>	Standard	Standard	Push/pull deadshaft	Unknown
<b>Tape Roll Load Direction Indicators</b>	Standard - Applied if web direction is known, otherwise they are supplied with the manual	Not available/supplied	Not available/supplied	Not available/supplied
<b>Tape and CCR Viewing Windows</b>	4 Clearview polycarbonate windows to monitor tape roll and CCR condition	4 "grated", partially obstructed windows to monitor tape roll and CCR condition	Top clearview polycarbonate to monitor the top tape roll only	Top clearview polycarbonate to monitor the top tape roll only
<b>LED Window Lighting</b>	Standard to aid in monitoring the tape roll and CCR condition	Not available	Not available	Not available
<b>Tape Change Alarm</b>	LED window lighting flashes to signal the press/process operator that it is time to check the tape roll condition. Standard in 2, 4 & 8 hour increments. Variable increment option available.	Not available	Not available	Not available

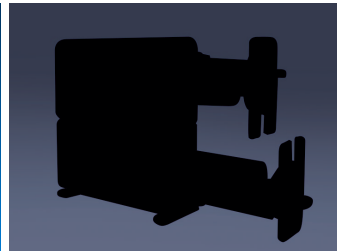
**Note: The blue shaded areas on this document suggest that the system is rated as "Best-in-Class" for that respective category.**

## Competitor Comparison

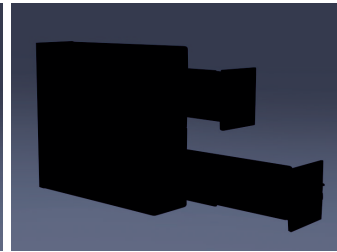
# Clamshell Style Contact Cleaning Roll Systems



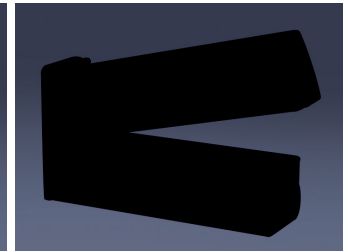
**Polymag Tek Inc.  
4RNWC-CD / 6RNWC-CD**



**Brand A**



**Brand B**



**Brand C**

### Machine "Footprint"

<b>End Width</b>	6.04" (153.4 mm) up to 24" FL 6.75" (171.5 mm) > 24" FL	5.8" (147 mm)	6.21" (158 mm)	6.77" (172 mm)
<b>Overall Height (Closed)</b>	17.21" (437.1 mm)	17.7" (450 mm)	18.23" (463 mm)	17.5" (444 mm)
<b>Baseplate to Web Height</b>	8.78" (222.9 mm)	8.8" (225 mm)	8.9" (226 mm)	8.35" (212 mm)
<b>Optional Mounting Foot to Web Height</b>	9.11" (231.1 mm)	Not available	Not available	Not Available
<b>Overall Face Length</b>	CCR face length + 5.69" (144.5 mm)	Cleaning width + 6.25" (159 mm)	Cleaning width + 5.4" (137 mm)	Web Width + 5.31" (135 mm)
<b>Contact Cleaning Roll (CCR) Face Lengths</b>	10" (254 mm) up to 40" (1016 mm) at 2" (50.8 mm) incremental lengths <sup>6</sup>	10.4" (264 mm), 13.97" (355 mm), 17.32" (440 mm), 20.87" (530 mm), 22.83" (580 mm), 24.88" (632 mm) and 30" (762 mm)	Unavailable	Cleaning Widths: 9.84" (250 mm) up to 25.59" (650 mm) at 1.97" (50 mm) Incremental Lengths <sup>6</sup>

1. Polymag® Tek does not recommend this maximum web speed for the OD of CCR that is being utilized. The lower the RPMs for the maximum speed the better. Brand C equals 2,544 RPMs at the Maximum Speed of 1,312 fpm (400 mpm). For comparison to all of the brands: Brand A equals 1,615 RPMs at 820 fpm (250 mpm); Brand B equals 1,783 RPMs at 700 fpm (213.3 mpm); Polymag® Tek equals 1,358 RPMs at 800 fpm (245 mpm). This would suggest that Polymag® Tek has the best in class CCR OD to RPM ratio of all of the competing brands at 2.25:1358.
2. Polymag® Tek maintains the largest OD of the competing brands. This large OD promotes the opportunity for more Polishing of the CCR to renew its surface every 12-18 months of use, rather than the need to recover the CCR's polymeric surface, or in some cases, the need to purchase an entirely new CCR. Polymag® Tek's design thereby provides another customer cost saving opportunity in regard to maintenance of the CCRs.
3. Polymag® Tek's use of deadshaft technology provides another customer cost saving opportunity in regard to CCR replacement since the fabrication of a new liveshaft for the CCR is not required.
4. Polymag® Tek only mounts their Active Static Elimination Bars on the top side of the web, so that the Emitter Pins are facing downward toward the web. This method of mounting reduces the maintenance required on Emitter Pins because dirt/contamination cannot get into the bar due to gravitational forces working on the contamination. Also, Polymag® Tek's testing has shown that it is not required to have top and bottom Active Static Elimination Bars working on the web to remove the static charge. The single bar on the top side of the web is more than sufficient.
5. Polymag® Tek utilizes both entrance and exit side Active Static Elimination Bars as standard on this model so that the CCRs do not have to work as hard to remove any statically charged dirt/contamination from the web. This increases the operating effectiveness of the CCRs and thereby increases the cleaning efficiency of the nip system (Please read the Polymag® Tek "Dirt Report").
6. Polymag® Tek increases the size of their cleaning system in 2" (50.8 mm) increments to reduce the operating cost of their system. The cost of the consumable Polymag® Tek Pre-Cut, Sheeted, Adhesive Tape is thereby minimized in respect to the customer's web width. It also is an equipment cost saving in regard to the "one size fits all", mass-produced cleaning systems, especially when the customer's web width exceeds 20" (508 mm).

**Note: The blue shaded areas on this document suggest that the system is rated as "Best-in-Class" for that respective category.**

**Note** that all information used in this comparison is strictly from the respective brands' advertising literature.

